

Product Description

A welcome screen displays your welcome message and banner



As you proceed to next step Setup detects the SharePoint Installation on the current machine and displays the SharePoint Server Path, it displays nothing and won't proceed if it doesn't find SharePoint.


IPS - Web Part Setup Wizard

IPS Web Parts
Please select the setup parameters to Deploy or Retract Web Parts.

Setup Parameters

SharePoint Server URL: http://spserver:2010/ (Central Administration)

Install Uninstall

Powered by  BioAXS
Your Key to Security

< Back Next > Cancel

Next step is to configure the Database for the Web Part Installation. You'll need to provide the following info

- Database Server Name
- Database Name
- Database User Name
- Password

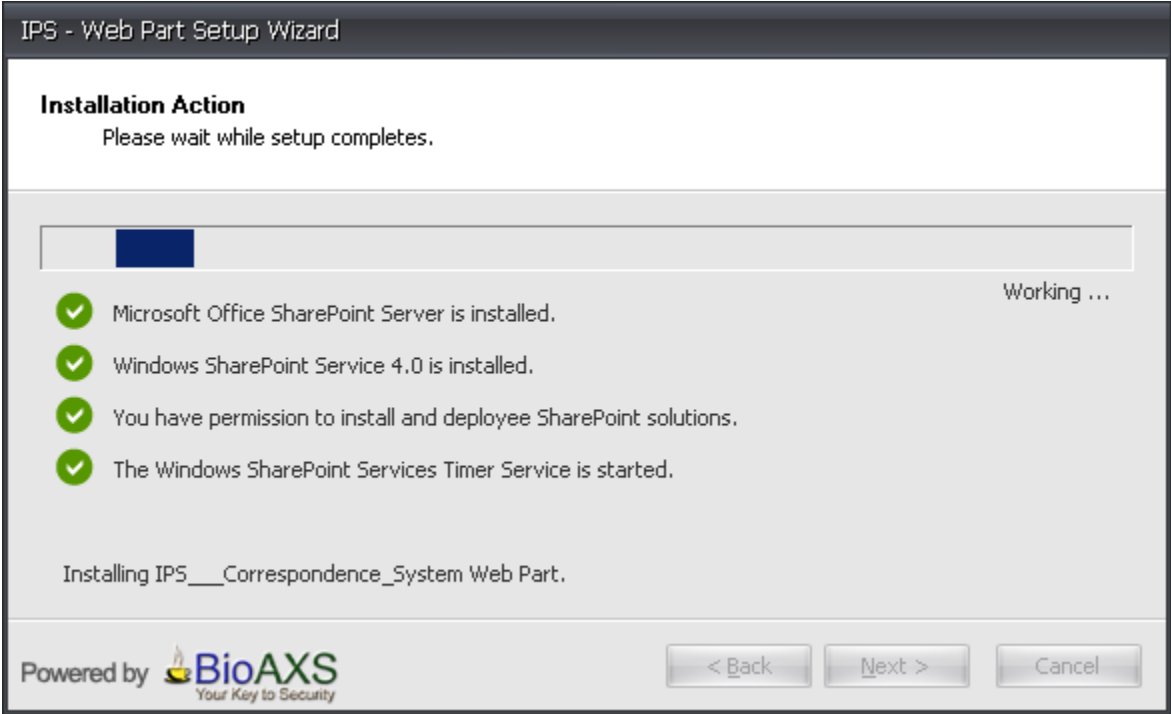
Database Connection Settings

Please set the values for Database Connection.

Database Connection Settings

Database Server Name:	<input type="text" value="SERVER"/>
Database Name:	<input type="text" value="ipsdb"/>
Database User Name:	<input type="text" value="myConn"/>
Password:	<input type="password" value="*****"/>

The Progress Dialog Screen will show you the installation progress of the components installing.



After Completion of the Web Part Installation Good Bye Screen will appear, it can be customized with your company logo.

